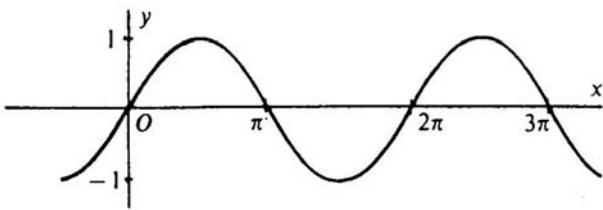


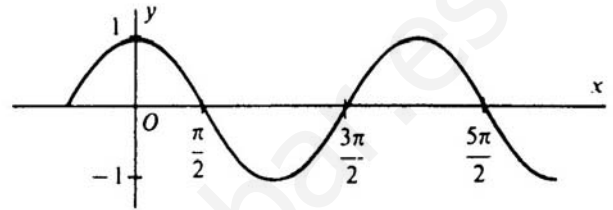
REPRESENTACIÓN GRÁFICA DE LAS FUNCIONES CIRCULARES

En todas las gráficas x está dado en radianes

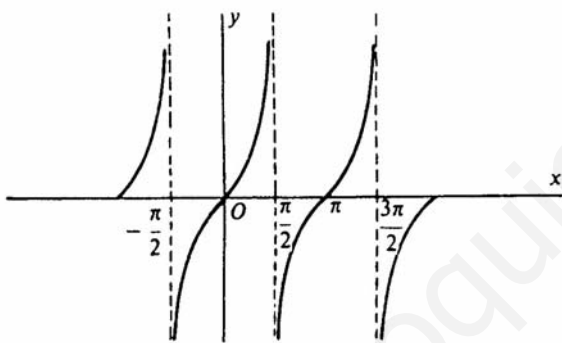
$$y = \text{sen } x$$



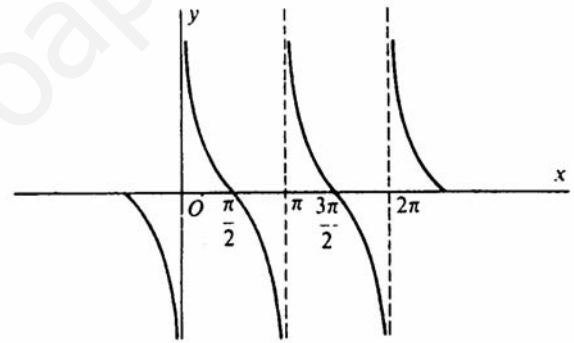
$$y = \text{cos } x$$



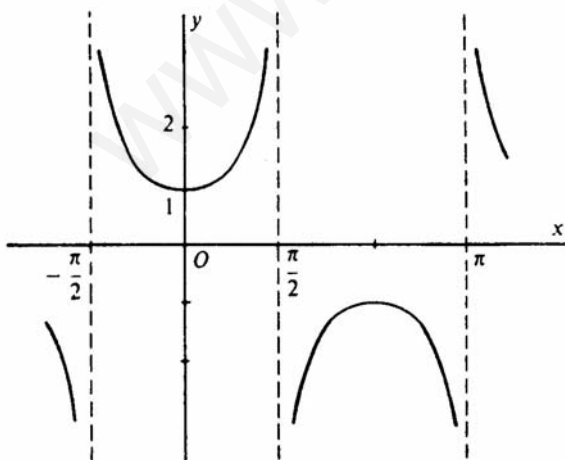
$$y = \text{tg } x$$



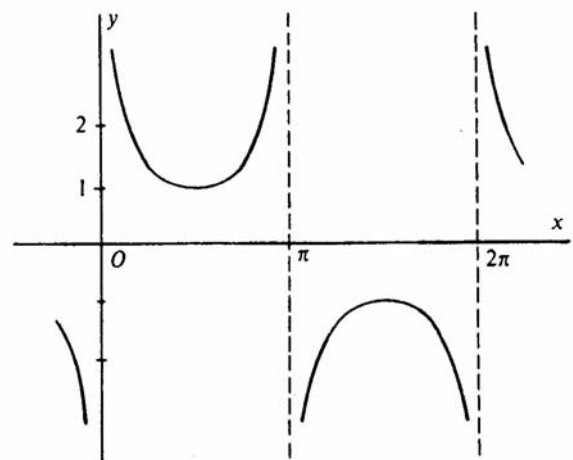
$$y = \text{cotg } x$$



$$y = \text{sec } x$$



$$y = \text{cosec } x$$



REPRESENTACIÓN GRÁFICA DE LAS FUNCIONES CIRCULARES INVERSAS

En todas las gráficas x está dado en radianes

