

# Cross-curricular extension unit 4

## Language and literature: Drama

1 Read a student's description of a play. Then match 1–7 with a–g.

'King Lear' is a famous play by William Shakespeare. It's a tragedy about an old man and his three daughters in England. He asks his daughters if they love him. He doesn't like his younger daughter's answer, so he's very angry. But then he finds out that he's wrong about her. The other daughters aren't very nice. They're horrible to their father, and he becomes very sad. The younger daughter wants to help her father, but he dies. It's a really sad play.

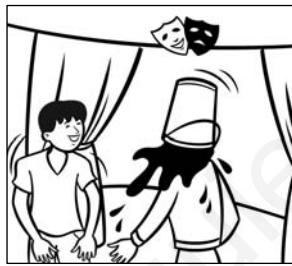
- |                                |                                    |
|--------------------------------|------------------------------------|
| 1 an old man and his daughters | a the <b>writer</b>                |
| 2 Lear asks a question         | b the <b>middle</b> of the play    |
| 3 Lear dies                    | c the <b>setting</b>               |
| 4 <i>King Lear</i>             | d the <b>title</b>                 |
| 5 Shakespeare                  | e the <b>beginning</b> of the play |
| 6 two daughters are horrible   | f the <b>ending</b> of the play    |
| 7 England                      | g the <b>main characters</b>       |

2 Label the pictures with the words in the box.

~~actor~~ actress audience cinema comedy historical drama romance theatre tragedy



1 *actor* and \_\_\_\_\_



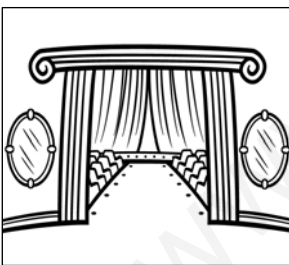
2 \_\_\_\_\_



3 \_\_\_\_\_



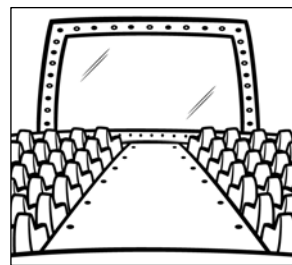
4 \_\_\_\_\_



5 \_\_\_\_\_



6 \_\_\_\_\_



7 \_\_\_\_\_

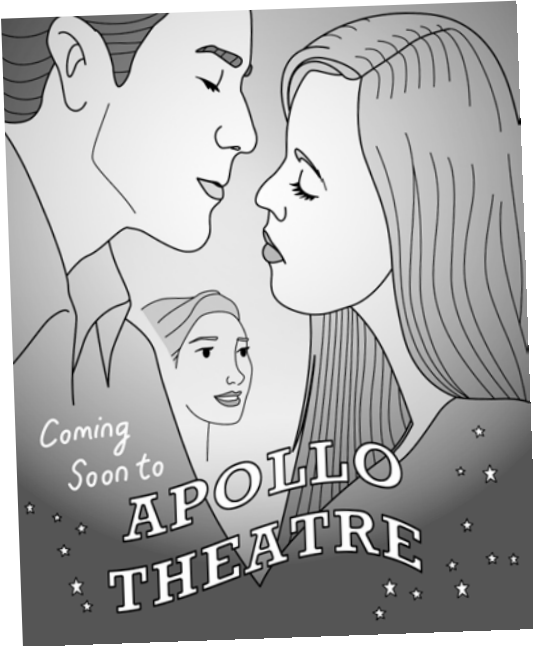


8 \_\_\_\_\_

3 Complete the sentences with the words from exercises 1 and 2.

- \_\_\_\_\_s and \_\_\_\_\_es are people. They act in plays or films.
- A \_\_\_\_\_ is a play or a film about love.
- Hamlet* is the \_\_\_\_\_ of a famous play by Shakespeare.
- The \_\_\_\_\_ watches a play or a film.
- A \_\_\_\_\_ is a very sad play or a film.
- Lorca is the \_\_\_\_\_ of many famous plays.
- We watch plays at a \_\_\_\_\_. We watch films at a \_\_\_\_\_.

- 4 Look at the poster for a play. What kind of play a–d do you think it is?



- a comedy       c romance   
 b tragedy       d historical drama

- 5 Read the extract from the play on the right and check your answer to exercise 4.

- 6 Read the extract again. Then answer the questions.

- 1 What is the title of the play? \_\_\_\_\_
- 2 Who is the writer? \_\_\_\_\_
- 3 Is this extract the beginning, middle, or ending of the play? \_\_\_\_\_
- 4 What is the setting for this extract?  
\_\_\_\_\_
- 5 How do the main characters know each other?  
 Jess is Cassie's \_\_\_\_\_  
 Matt is Cassie's \_\_\_\_\_  
 Mr Wright is Jess's \_\_\_\_\_  
 Mr Wright is Matt's \_\_\_\_\_
- 6 Do you think this play has got a happy or a sad ending? Why?  
\_\_\_\_\_

- 7 Answer the questions about your favourite play.

- 1 What is the title of the play? Who is the writer?
- 2 What type of play is it?
- 3 Who are the main characters? What is the setting?
- 4 Why do you like this play?

## Love Story by William Green

### Characters

Jess, a 17-year-old student

Matt, an 18-year-old actor

Cassie, Jess's friend

### Act I, scene I

*[A party at Cassie's house.]*

*[Someone knocks\* at the door.]*

JESS: Cassie, there's someone at the door.

Cassie! CASSIE!

CASSIE: What? Oh, sorry, Jess. It's noisy in here.

*[Someone knocks again.]*

CASSIE: Coming! *[Cassie opens the door.]* Oh, hi

Matt. Come in! *[Matt and Cassie walk*

*across the room.]* Matt, meet my friend,

Jess. Jess, meet my boyfriend, Matt.

He's an actor ... I sometimes help him

with his costumes.

*[Another person knocks.]*

CASSIE: Oh no, I've got to go – again! See you in a minute!

JESS: *[Interested]* An actor? Wow, that's really interesting. I go to drama school on Saturdays ...

MATT: Yes, I know. You're in my dad's class. He talks about you a lot. He thinks you're really good ...

JESS: *[surprised]* Mr Wright is your dad?

Yes, you look a bit like him.

MATT: Er ... thanks ... I think!

JESS: So, are you in any plays at the moment?

MATT: Yes, I'm in Romeo and Juliet at the city theatre. I'm Romeo.

JESS: Oh, I love that play! It's my favourite!

MATT: Really? Me too. Cassie hates it. She doesn't like tragedies. ... Listen, why don't you come and see it? It's on all summer.

JESS: Sounds great! If Cassie doesn't mind ...

### Glossary

\* People knock at the door when they want to come in.